

1

2

3

4

5

6

7

4'-0"

**FIRE
RISER
73 SQ
FT**

PLUMBING SLAB
LEAVE OUT

**SUITE 100
2,501 SF**

**SUITE 102
1,428 SF**

**SUITE 104
1,834 SF**

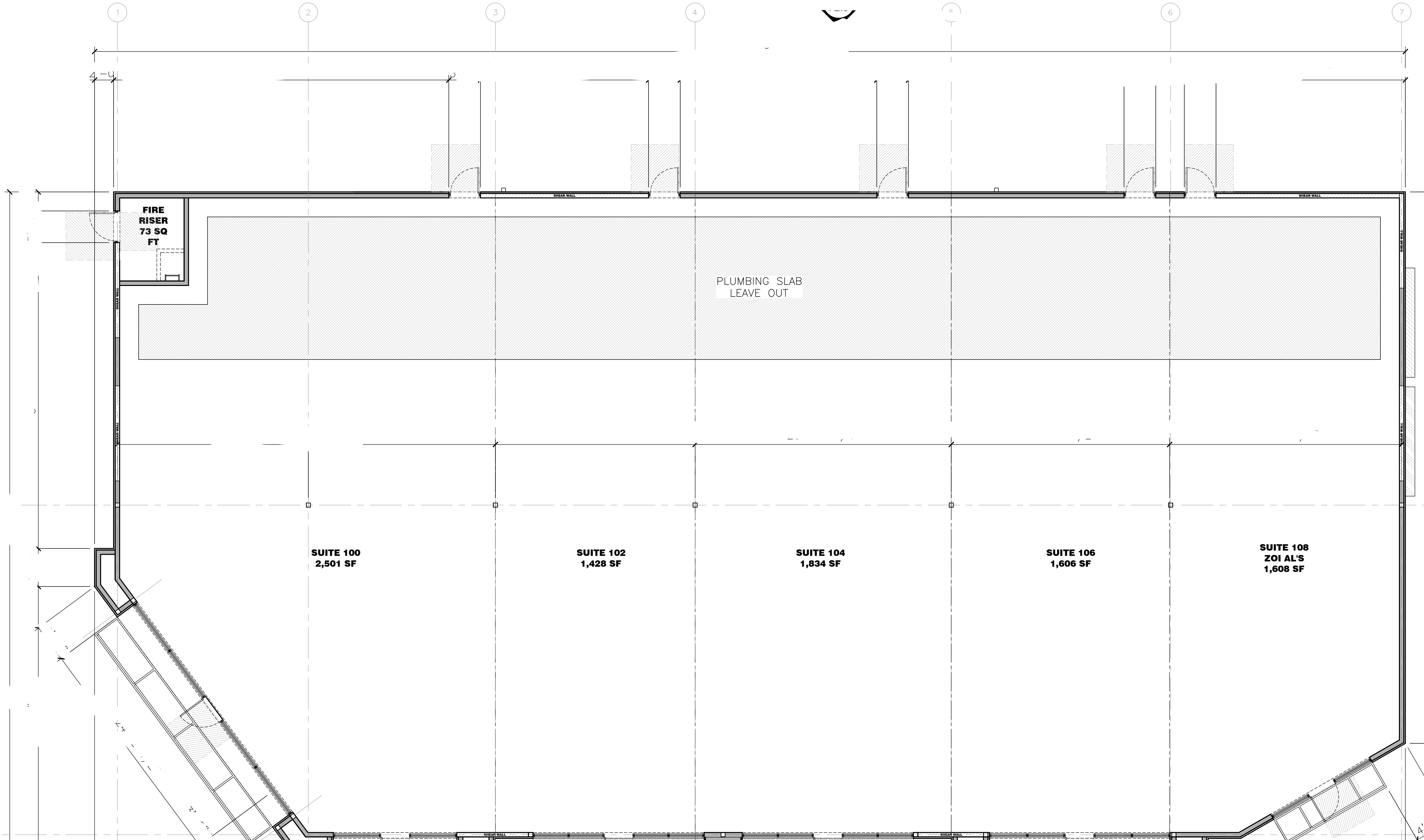
**SUITE 106
1,606 SF**

**SUITE 108
ZOI AL'S
1,608 SF**

1
A2.1

B

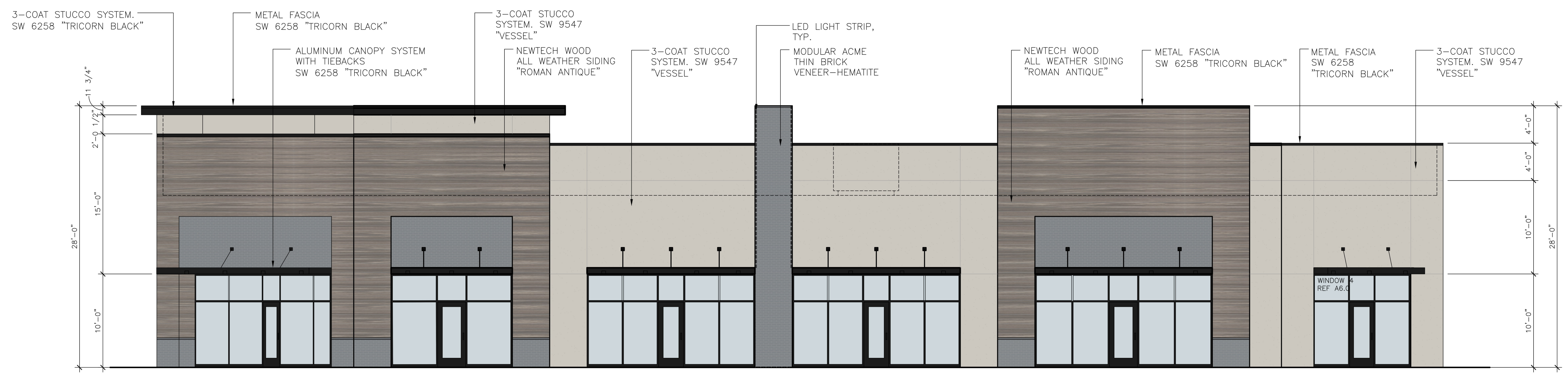
A





ARCHITECTS

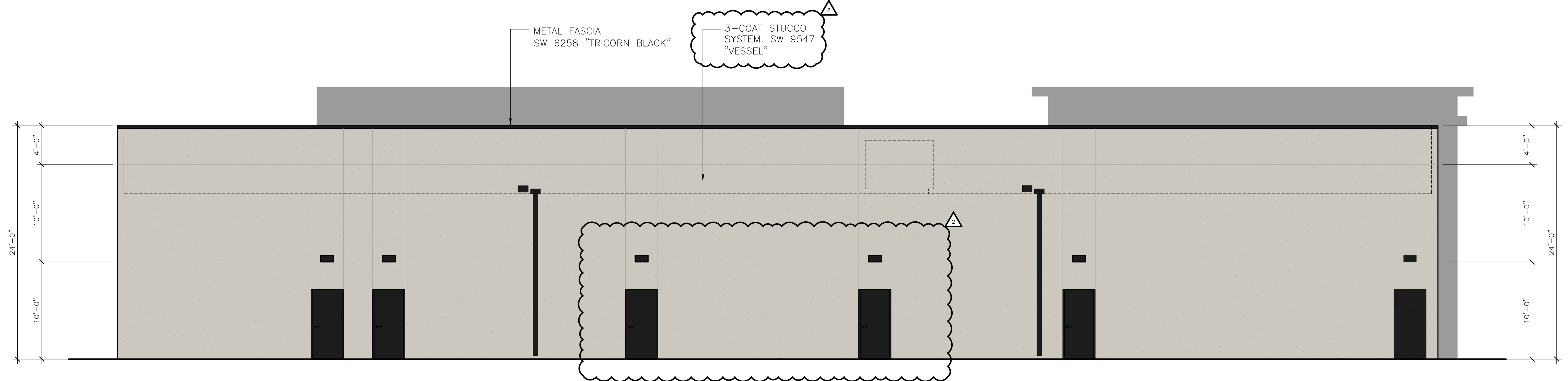
SLATE
LAND & DEVELOPMENT CO



NOTE: ROOF MOUNTED MECHANICAL EQUIPMENT SHALL BE SUFFICIENTLY SCREENED FROM VIEW BY PARAPET WALLS, AND GROUND MOUNTED EQUIPMENT SHALL BE ENCLOSED BY MASONRY WING WALLS THAT MATCH THE MATERIAL OF THE BUILDING.

NOTE: ALL LIGHT SOURCES, INCLUDING WALL PACKS, SHALL BE FULL CUT-OFFS.

1 - SOUTH ELEVATION SCALE 3/16"=1'-0"



2 - NORTH ELEVATION SCALE 3/16"=1'-0"

BUILDING MATERIAL CALCULATIONS BUILDING											
East Elevation		West Elevation		North Elevation		South Elevation		Totals			
Materials	SF	%	SF	%	SF	%	SF	%	SF	%	SF
Stucco	1,378	100.00%	1,000	59.77%	3,107	1479.00%	1,201	53.47%	6,686	79.56%	
All Weather Siding	0	0.00%	474	28.33%	0	0.00%	696	30.99%	1,170	13.92%	
Modular Brick	0	0.00%	199	11.89%	0	0.00%	349	15.54%	548	6.50%	
Totals (Excluding Glazing)	1,378	100%	1,673	100%	3,107	1479%	2,246	100%	8,404	139%	
Materials	SF	%	SF	%	SF	%	SF	%	SF	%	SF
Glazing/Opening	0	0.00%	298	15.12%	119	3.65%	800	26.26%	1,217	12.85%	
Total Façade	1,378	0%	1,971	15%	3,226	4%	3,046	26%	9,621	13%	

KEYED NOTES

- CJ MASONRY/STUCCO EXPANSION/CONTROL JOINT
- AC ALUMINUM CANOPY SYSTEM WITH TIEBACK PAINTED SW 6258 "TRICORN BLACK"
- L1 G.C. PROVIDED RECESSED CAN LIGHTS MOUNTED IN CANOPY SYSTEM, CENTER BETWEEN CANOPY BRACES
- L2 G.C. PROVIDED EXTERIOR WALL SCONCES, REFERENCE MEP, CENTER OVER DOOR U.N.O.
- L4 LED LIGHT STRIP, REF MEP
- NT ALL WEATHER SIDING BY NEWTECH WOOD, COLOR: "ROMAN ANTIQUE"
- TG INSULATED & TEMPERED GLASS AS INDICATED ON SHEET A6.0 (WINDOW TYPES & SCHEDULES)
- RB ROOFTOP LINE BEYOND PARAPET
- RU ROOFTOP UNIT BEYOND, SIZE AND LOCATION DETERMINED BY FUTURE TENANTS
- OS OVERFLOW SCUPPER, REFERENCE DETAIL 13/A5.1, TO BE 2" HIGHER THAN ROOF SURFACE
- BR MODULAR SIZE THIN BRICK BY ACME OR EQUAL, COLOR: "HEMATITE"

- DS 6 INCH DOWN SPOUT FROM GUTTER SYSTEM SCUPPER & COLLECTOR, COLOR TO MATCH SW 6258 "TRICORN BLACK"
- SU THREE COAT STUCCO SYSTEM, SEE WALL SECTIONS. COLOR A: SW 6258 "TRICORN BLACK" COLOR B: SW 9547 "VESSEL"
- D HOLLOW METAL DOOR & FRAME - PAINT TO MATCH COLOR SW 6258 "TRICORN BLACK"
- SF "BLACK" ANODIZED ALUMINUM STOREFRONT SYSTEM BY YKK AP INDUSTRIES OR EQUAL
- AD ADA DOOR SIGNAGE REFERENCE DETAILS ON SHEET A5.1
- MF METAL FASCIA BY METAL ERA OR EQUAL COLOR TO MATCH SW 6258 "TRICORN BLACK"
- RW RETAINING WALL, REFER TO CIVIL FOR ADDITIONAL INFORMATION
- BM BREAK METAL, MATCH METAL FASCIA COLORS

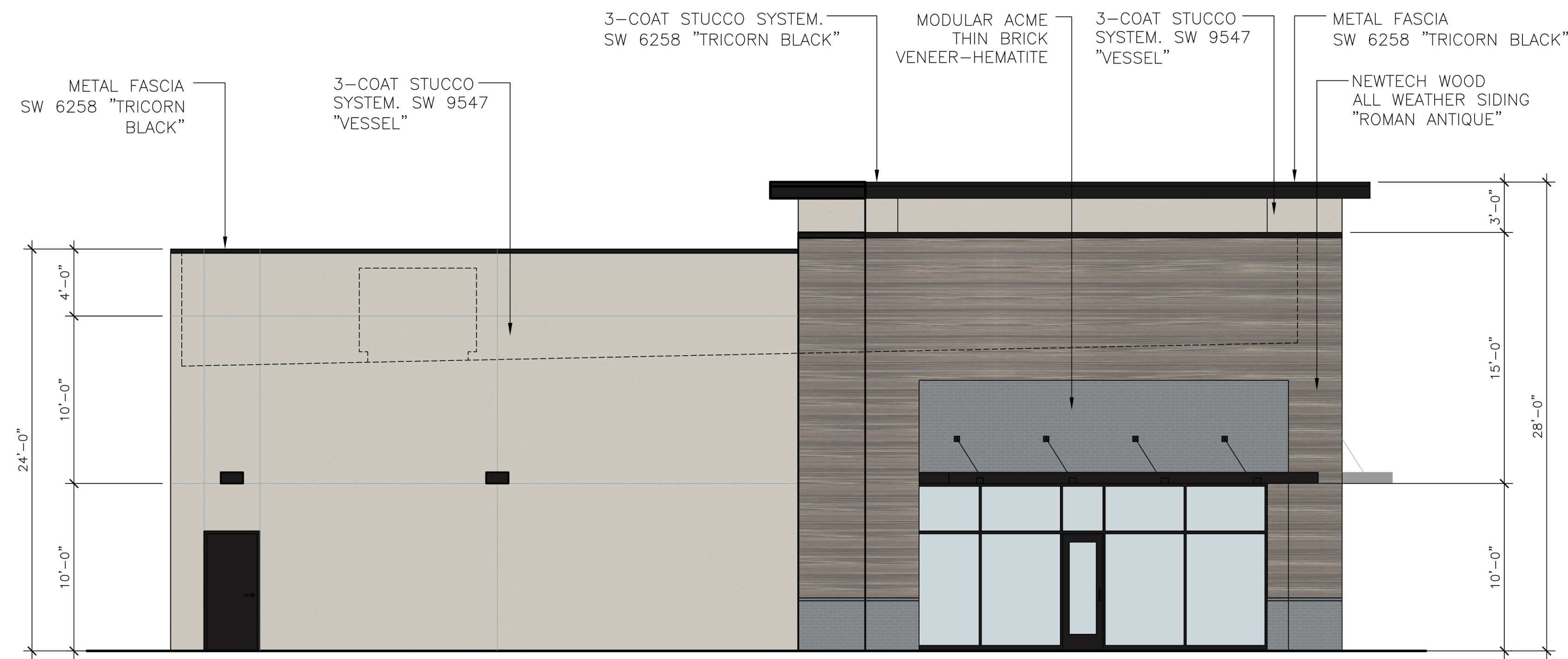
MATERIAL BOARD



DRAWING ISSUE & REVISION LOG

NO.	DATE	DESCRIPTION
PERMIT	11/24/2025	PERMIT SUBMITTAL DRAWINGS - AMFP
REV01	12/23/2025	REV1 - CIVIL CORROBORATION
REV02	01/20/26	REV02 - CITY COMMENTS

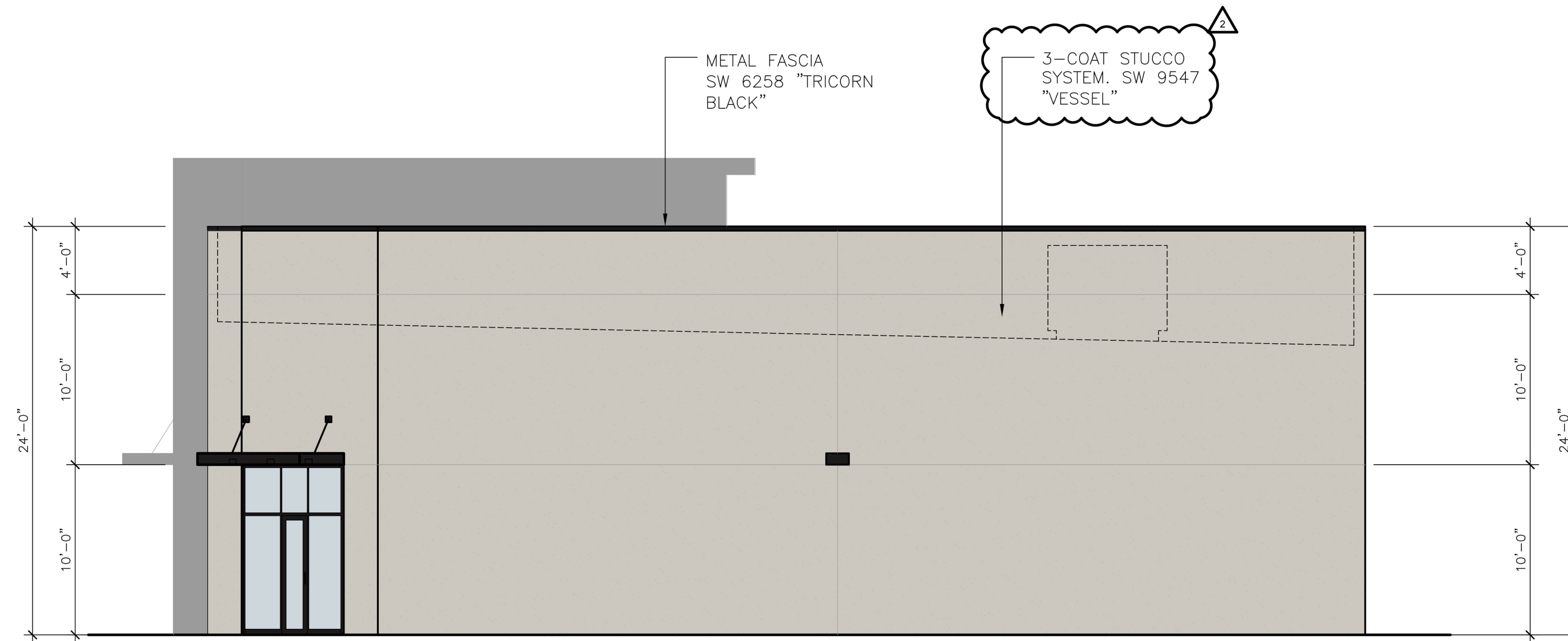
PROJECT NAME: SLATE SHOPS AT SACHSE BUILDING 2
PROJECT DESCRIPTION: MULTI-TENANT SHELL BUILDING - MIXED USE
PROJECT ADDRESS: 1300 W. I-75
SACHSE, TX 75048



1 - WEST ELEVATION SCALE 3/16"=1'-0"

NOTE: ROOF MOUNTED MECHANICAL EQUIPMENT SHALL BE SUFFICIENTLY SCREENED FROM VIEW BY PARAPET WALLS, AND GROUND MOUNTED EQUIPMENT SHALL BE ENCLOSED BY MASONRY WING WALLS THAT MATCH THE MATERIAL OF THE BUILDING.

NOTE: ALL LIGHT SOURCES, INCLUDING WALL PACKS, SHALL BE FULL CUT-OFFS.



2 - EAST ELEVATION SCALE 3/16"=1'-0"

BUILDING MATERIAL CALCULATIONS BUILDING											
East Elevation		West Elevation		North Elevation		South Elevation		Totals			
Materials	SF	%	SF	%	SF	%	SF	%	SF	%	SF
Stucco	1,378	100.00%	1,000	59.77%	3,107	1479.00%	1,201	53.47%	6,686	79.56%	6,686
All Weather Siding	0	0.00%	474	28.33%	0	0.00%	696	30.99%	1,170	13.92%	1,170
Modular Brick	0	0.00%	199	11.89%	0	0.00%	349	15.54%	548	6.50%	548
Totals (Excluding Glazing)	1,378	100%	1,673	100%	3,107	1479%	2,246	100%	8,404	139%	8,404
Materials	0	0.00%	298	15.12%	119	3.65%	800	26.26%	1,217	12.85%	1,217
Glazing/Openings	0	0.00%	0	0.00%	0	0.00%	0	0.00%	0	0.00%	0
Total Façade	1,378	0%	1,971	15%	3,226	4%	3,046	26%	9,621	13%	9,621

KEYED NOTES

- CJ MASONRY/STUCCO EXPANSION/CONTROL JOINT
- AC ALUMINUM CANOPY SYSTEM WITH TIEBACK PAINTED SW 6258 "TRICORN BLACK"
- L1 G.C. PROVIDED RECESSED CAN LIGHTS MOUNTED IN CANOPY SYSTEM, CENTER BETWEEN CANOPY BRACES
- L2 G.C. PROVIDED EXTERIOR WALL SCONCES, REFERENCE MEP, CENTER OVER DOOR U.N.O.
- L4 LED LIGHT STRIP, REF MEP
- NT ALL WEATHER SIDING BY NEWTECH WOOD, COLOR: "ROMAN ANTIQUE"
- TG INSULATED & TEMPERED GLASS AS INDICATED ON SHEET A6.0 (WINDOW TYPES & SCHEDULES)
- RB ROOFTOP LINE BEYOND PARAPET
- RU ROOFTOP UNIT BEYOND, SIZE AND LOCATION DETERMINED BY FUTURE TENANTS
- OS OVERFLOW SCUPPER, REFERENCE DETAIL 16/A5.1, TO BE 2" HIGHER THAN ROOF SURFACE
- BR MODULAR SIZE THIN BRICK BY ACME OR EQUAL, COLOR: "HEMATITE"

- DS 6 INCH DOWN SPOUT FROM GUTTER SYSTEM SCUPPER & COLLECTOR, COLOR TO MATCH SW 6258 "TRICORN BLACK"
- SU THREE COAT STUCCO SYSTEM, SEE WALL SECTIONS COLOR A: SW 6258 "TRICORN BLACK" COLOR B: SW 9547 "VESSEL"
- D HOLLOW METAL DOOR & FRAME - PAINT TO MATCH COLOR SW 6258 "TRICORN BLACK"
- SF "BLACK" ANODIZED ALUMINUM STOREFRONT SYSTEM BY YKK AP INDUSTRIES OR EQUAL
- AD ADA DOOR SIGNAGE REFERENCE DETAILS ON SHEET A5.1
- MF METAL FASCIA BY METAL ERA OR EQUAL COLOR TO MATCH SW 6258 "TRICORN BLACK"
- RW RETAINING WALL, REFER TO CIVIL FOR ADDITIONAL INFORMATION
- BM BREAK METAL, MATCH METAL FASCIA COLORS

MATERIAL BOARD



REGISTERED ARCHITECT
JERRY WILLIAMS
STATE OF TEXAS

ARCHITECTS

SLATE
LAND & DEVELOPMENT CO

DRAWING ISSUE & REVISION LOG

NO.	DATE	DESCRIPTION
PERMIT	11/24/2025	PERMIT SUBMITTAL DRAWINGS - AMFP
REV1	12/23/2025	REV1 - CIVIL CORROBORATION
REV2	01/20/26	REV2 - CITY COMMENTS

PROJECT NAME: SLATE SHOPS AT SACHE
 BUILDING 2
 PROJECT DESCRIPTION: MULTI-TENANT SHELL BUILDING - MIXED USE
 PROJECT ADDRESS: 1300 W. CT. 2900
 SACHE, TX 75408

PROJECT NUMBER: JWA-25-015
 DATE: JUN 25, 2025