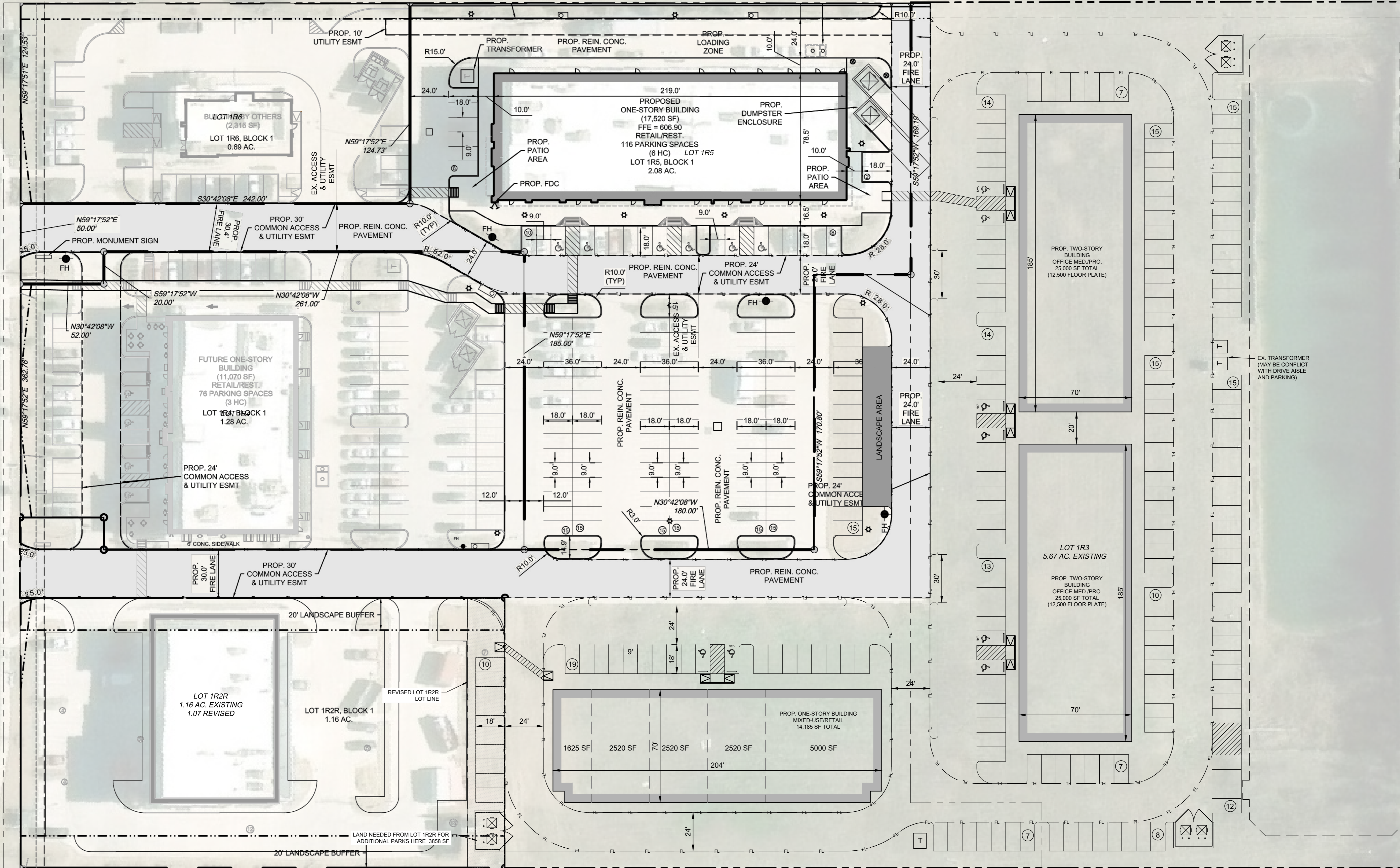


EAST BROAD STREET
(R-O-W VARIES) (CONCRETE)



BLD LOT 1R6 BY OTHERS
(2,315 SF)
LOT 1R6, BLOCK 1
0.69 AC.

PROPOSED
ONE-STORY BUILDING
(17,520 SF)
FFE = 606.90
RETAIL/REST.
116 PARKING SPACES
(6 HC) LOT 1R5
LOT 1R5, BLOCK 1
2.08 AC.

FUTURE ONE-STORY
BUILDING
(11,070 SF)
RETAIL/REST.
76 PARKING SPACES
(3 HC)
LOT 1R4, BLOCK 1
1.28 AC.

PROP. TWO-STORY
BUILDING
OFFICE MED./PRO.
25,000 SF TOTAL
(12,500 FLOOR PLATE)

LOT 1R3
5.67 AC. EXISTING

PROP. TWO-STORY
BUILDING
OFFICE MED./PRO.
25,000 SF TOTAL
(12,500 FLOOR PLATE)

LOT 1R2R
1.16 AC. EXISTING
1.07 REVISED

LOT 1R2R, BLOCK 1
1.16 AC.

PROP. ONE-STORY BUILDING
MIXED-USE/RETAIL
14,185 SF TOTAL

1625 SF 2520 SF 2520 SF 5000 SF

LAND NEEDED FROM LOT 1R2R FOR
ADDITIONAL PARKS HERE 3858 SF

EX. TRANSFORMER
(MAY BE CONFLICT
WITH DRIVE AISLE
AND PARKING)